

A faded, light gray world map serves as the background for the slide. The continents are clearly visible but the map is not detailed, showing only the outlines of the landmasses.

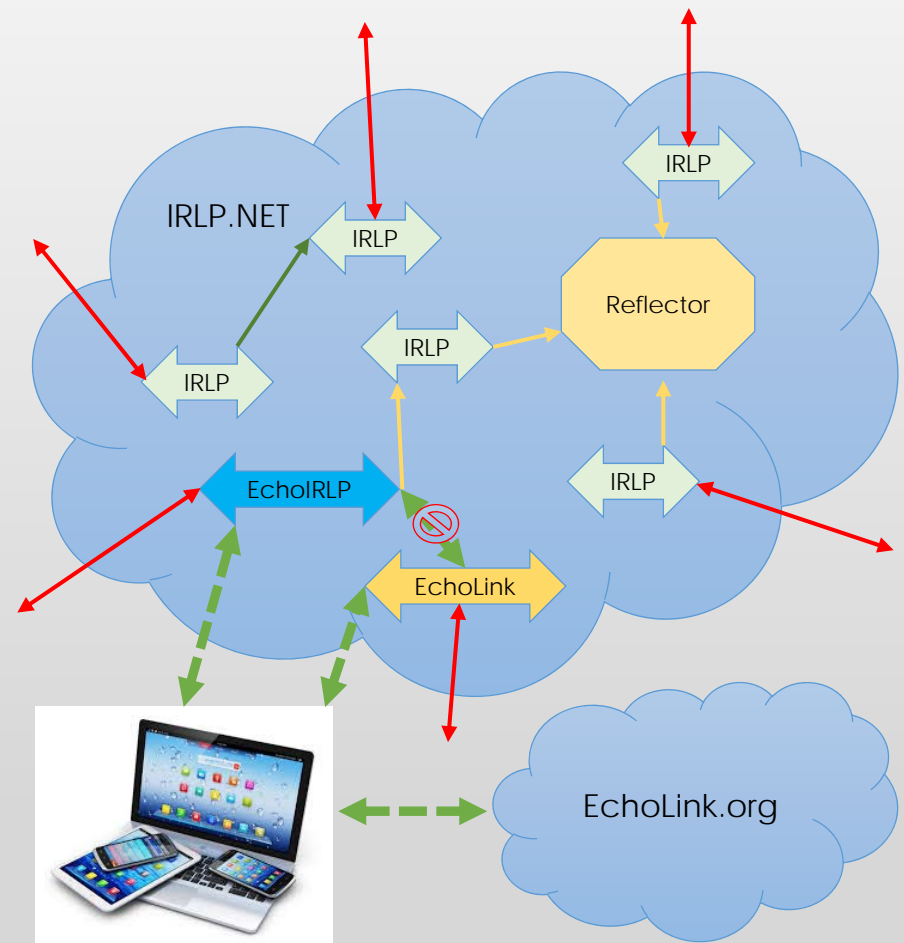
W6EK-R ECHOIRLP, HYBRID ANALOG / DIGITAL SYSTEM

Birton Gilbert | N6UG

IRLP AND ECHOLINK

Summary

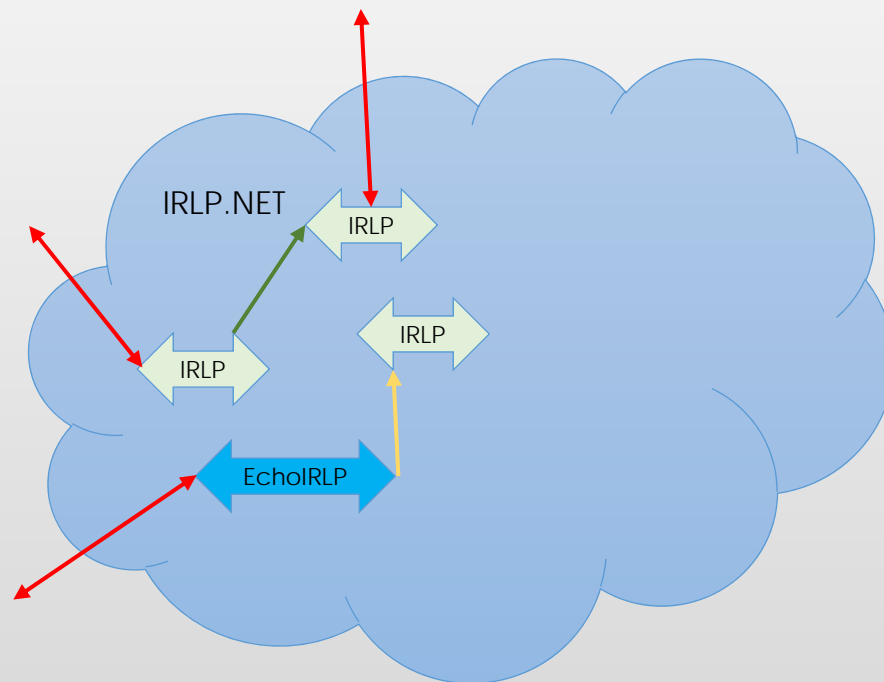
- **Internet Radio Linking Project, IRLP** is a node-to-node IP connection system. No client software.
- EchoLink is a node-to-node and client-to-node connection system.



IRLP TO IRLP

Summary

- This is a single node/repeater to a single node/repeater network.
- Connections are initiated by
 - Operator keying 4 digit DTMF into an RF radio,
 - Control operator making a connection by logging into the node computer.
- A connection creates a path for all audio between repeaters / IRLP nodes.
- Node owners can block nodes that the owner considers:
 - Improperly configured,
 - Causing interference or,
 - At their discretion.
- Outgoing connections between W6EK IRLP and other nodes are controlled by control operator during a startup period.
- All incoming connections are allowed, so far.

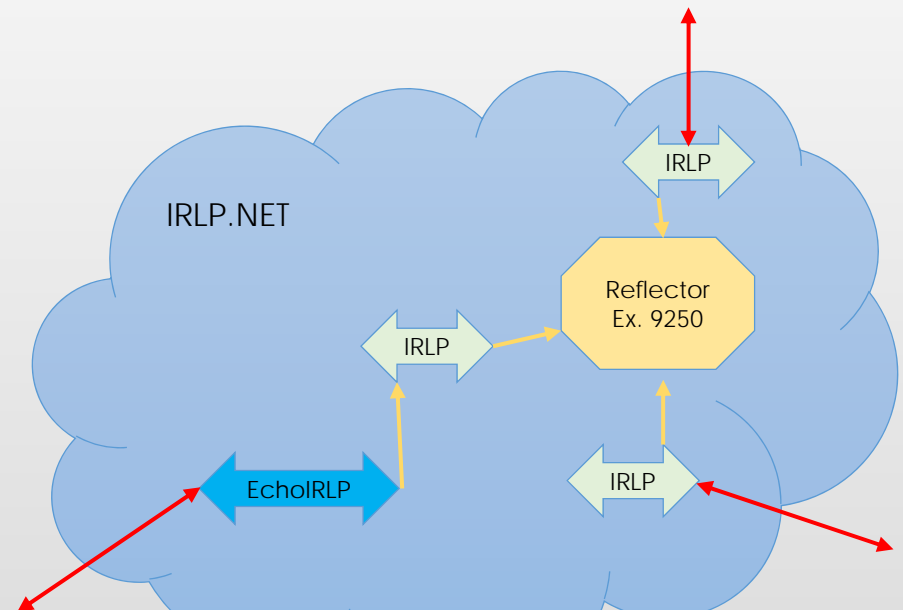


3128	W6EK	Auburn	CA	USA	145.4300	09:02	IDLE	13 Secs
----------------------	------	--------	----	-----	----------	-------	------	---------

IRLP TO REFLECTOR

Summary

- This is a one node/repeater to many node/repeater network.
- The connection may be direct to a reflector or indirect through another node/repeater.
- The number of conversations can increase quickly causing disruption to all connected stations.
- Connections are initiated by
 - Operator keying 4 digit DTMF into an RF radio,
 - Control operator making a connection by logging into the node computer.
- A connection creates a path for all audio between all repeaters / IRLP nodes.
- Node owners can block nodes that the owner considers:
 - Improperly configured,
 - Causing interference or,
 - At their discretion.
- Outgoing connections between W6EK IRLP and other nodes are controlled by control operator during a startup period.
- All incoming connections are allowed, so far.



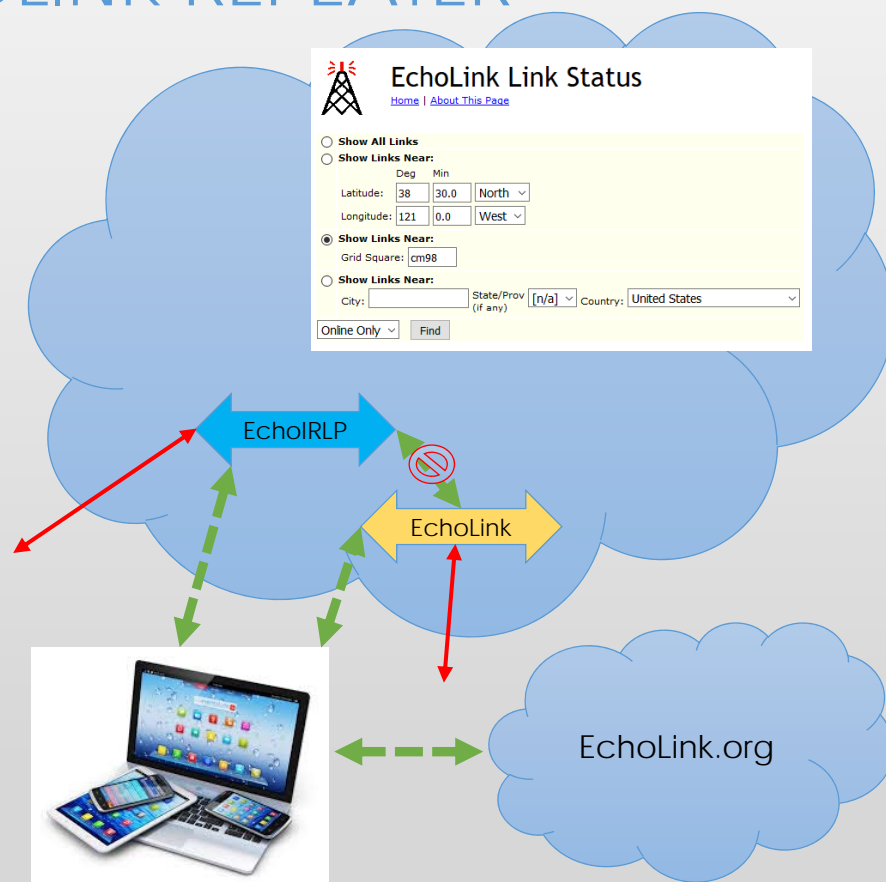
Nodes connected to this Reflector:
Channel: 9250 - 8 Nodes.

L	3058	Reno/Sparks	NV	USA	00 days 12 hours 49 mins 18 secs.
L	4326	Kent	WA	USA	01 days 15 hours 07 mins 12 secs.
L	4514	Portland	OR	USA	07 days 19 hours 17 mins 07 secs.
L	4873	Nitro	WV	USA	00 days 03 hours 00 mins 34 secs.
L	5620	Salt Lake City	UT	USA	00 days 00 hours 21 mins 27 secs.
L	7111	New Albany	IN	USA	00 days 00 hours 36 mins 21 secs.
L	7864	Golden Valley	AZ	USA	39 days 16 hours 50 mins 59 secs.
L	8267	Thousand Oaks	CA	USA	00 days 13 hours 50 mins 22 secs.

ECHOLINK CLIENT TO ECHOLINK REPEATER

Summary

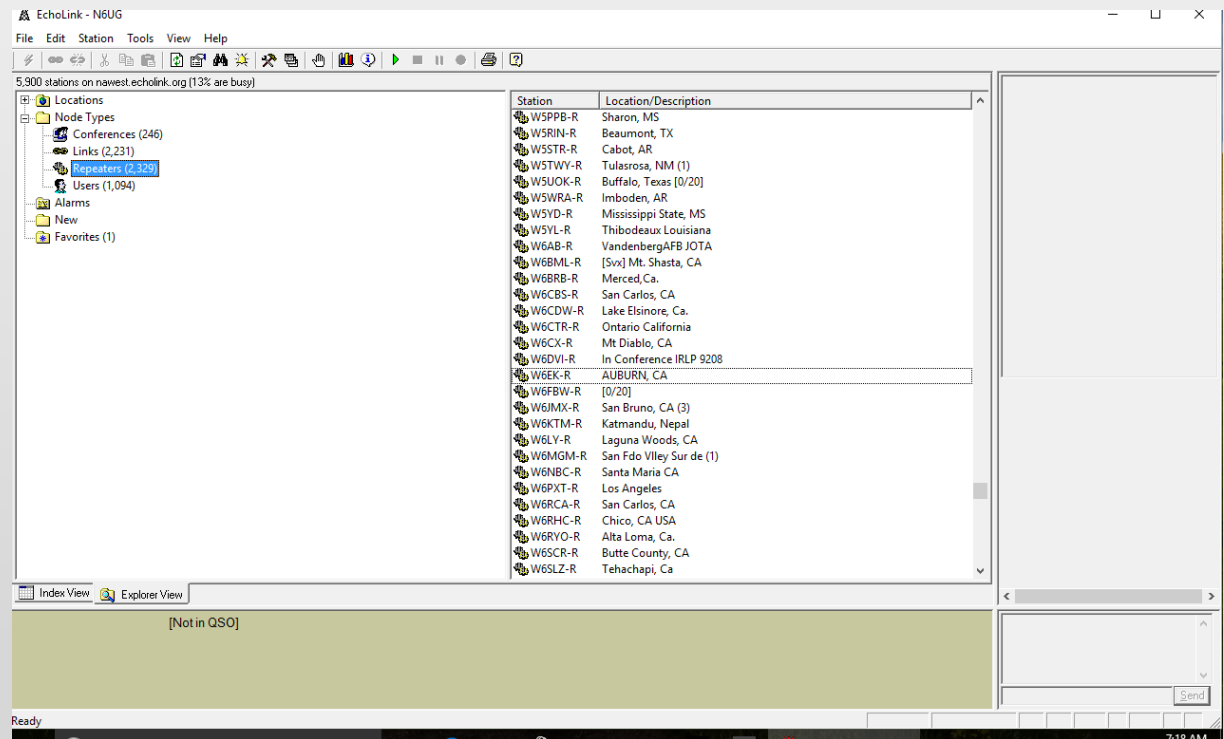
- This is a "Client" to a single node/repeater network.
- Connections are initiated by the client user via Echolink software. This runs on Windows, Android and iPhone.
- A connection creates a path for all audio between Client and Repeater.
- Echolink repeater owners can allow/block nodes.
- W6EK Echolink:
 - Allows all paid members to connect into the node,
 - Per member requests, special guess have been allowed.
 - Control operators can connect Echolink to other Echolink nodes but this is discouraged.
 - Currently 10 stations are allowed to connect simultaneously.



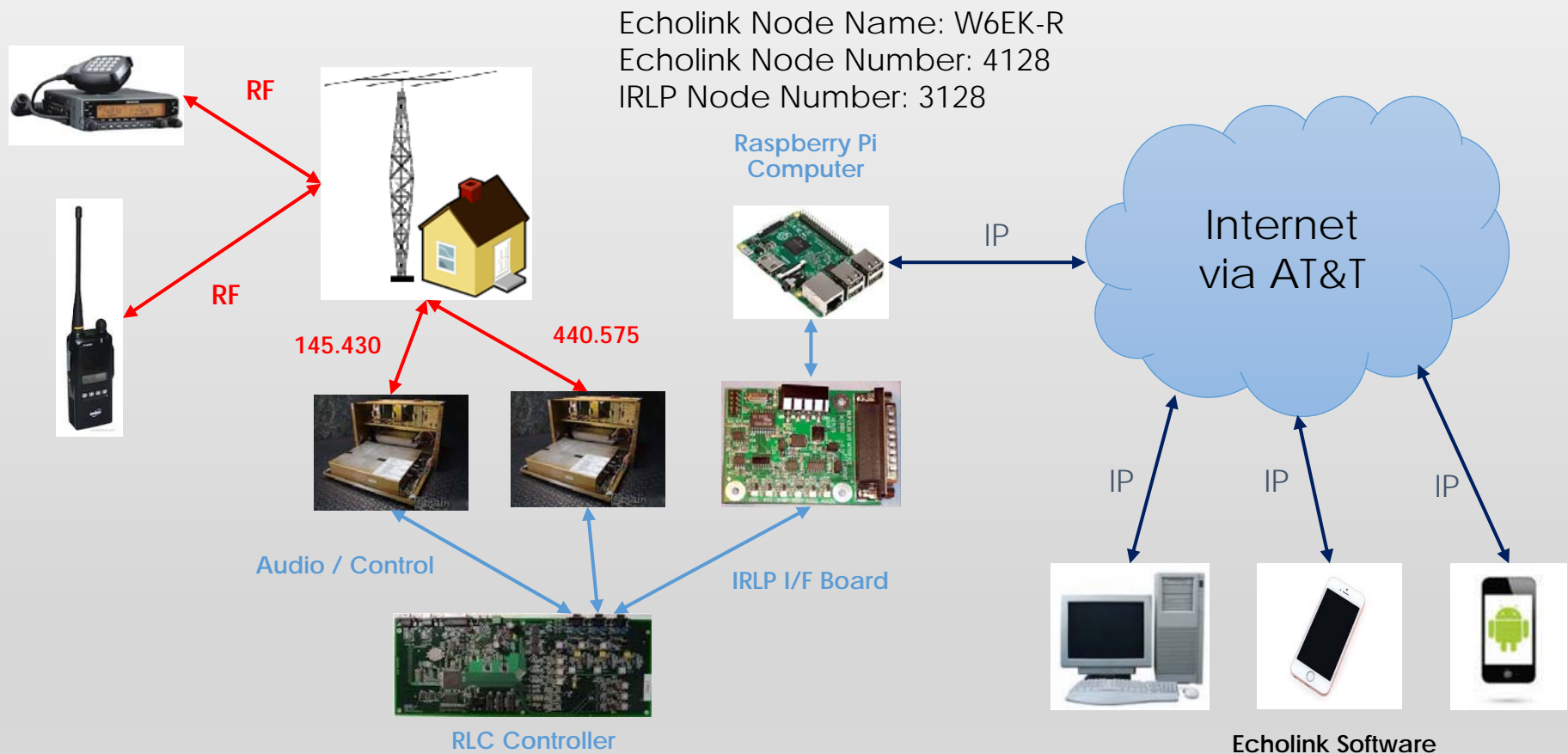
W6EK-R	AUBURN, CA	4128	38°54.42' N 121°03.88' W	CM98lv	28.4	145.430	162.2	25	40	3dB omni	Online	On @1852	11/11/2016 16:53
------------------------	------------	------	-----------------------------	------------------------	------	---------	-------	----	----	-------------	--------	----------	------------------

ECHOLINK, W6EK-R #4128

- User authorization
 - Verified HAM operators
 - Password protected
- Node list
 - Multiple node types
 - Ability to save favorites
 - Searchable by type
- Client tools
 - Windows
 - Android
 - iPhone



HARDWARE VIEW



Questions?

ACKNOWLEDGEMENTS

- Dave Cameron VE7LTD – IRLP System
- Jonothan Taylor K1RFD – EchoLink
- Pete Illmayer VK2YX – EchoIRLP update server
- Kent Johnson W7AOR – Test reflector
- EchoIRLP Developers – Open source has many contributors.
- And all those hams who offered positive feedback and made it all worthwhile.

Thank You!

W6EK IS AN ECHOIRLP SERVER

SUMMARY

- Server: Raspberry Pi
- Interface: IRLP Board
- Echolink Node Name: W6EK-R
- Echolink Node Number: 4128
- IRLP Node Number: 3128

IMPLEMENTATION

- All IRLP incoming connections, ACCEPTED.
- All IRLP outgoing connections, CONTROLLED*.
- Echolink incoming connections, LIMITED (paid members & special quests).
- Echolink outgoing connections, PROHIBITED.
- Control operators initiate the connection during startup.