

HAMFEST 2022 PARKING PLAN



LEGEND:

- Vehicular Traffic Flow
- Pedestrian Traffic Flow

I-80
Horseshoe Bar Road

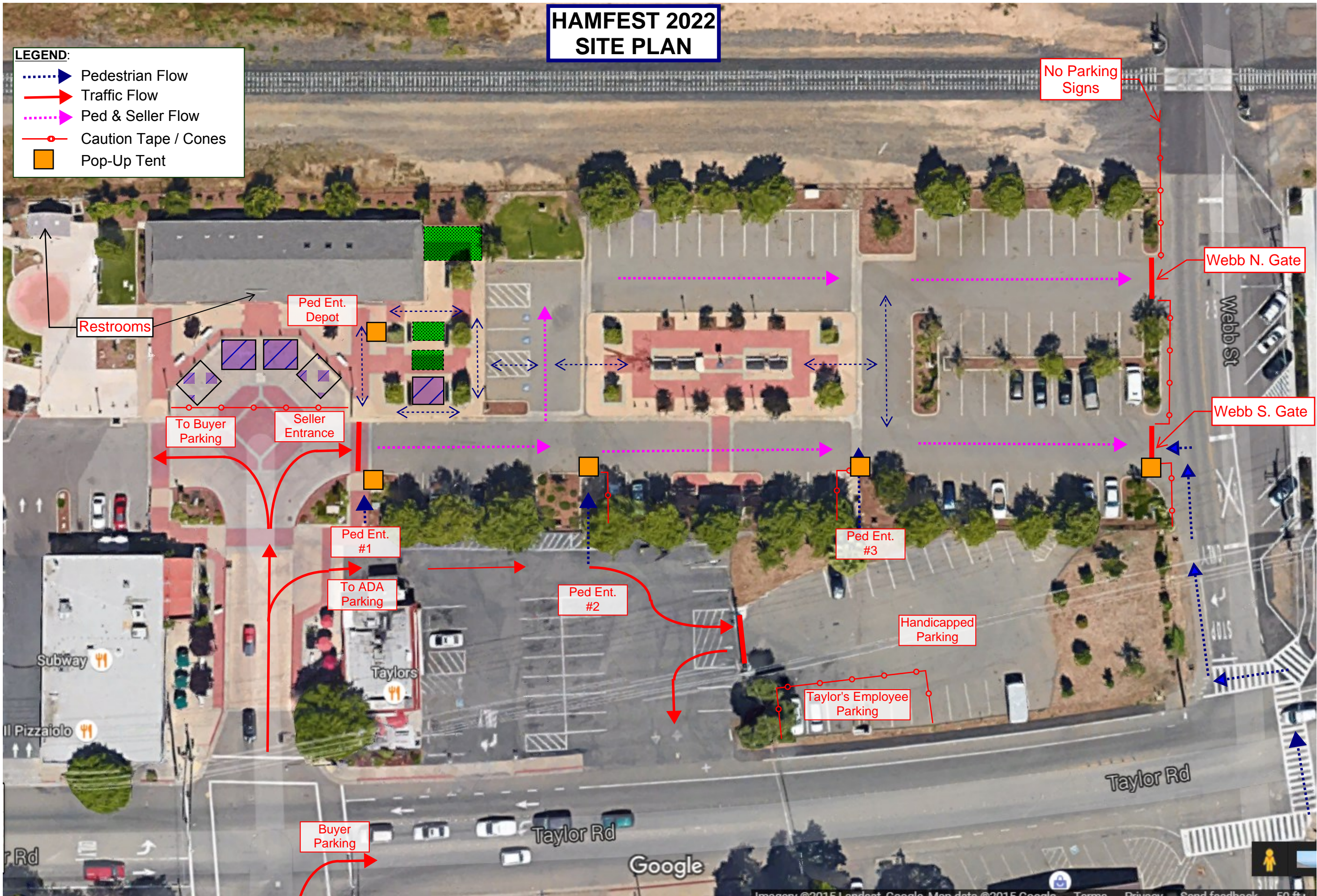
- Parking Area Names:**
- 1) Blue Anchor Parking - 26 Cars
 - 2) Blue Goose West - 55 Cars
 - 3) Blue Goose East - 50 Cars
 - 4) Loomis School - 150 Cars + 6 ADA
 - 5) Christensen, Walnut Street Parking - 7 Cars
 - 6) City Parking - 48 Cars
 - 7) Leader Drugs, Walnut Street Parking - 7 Cars
 - 8) Magnolia Street Parking - 12 Cars
 - 9) Laird Street Parking - 10 Cars
- > ADA @ Taylors - 17 Cars

- Parking Notes:**
- > Taylors Employee Parking. We need to mark-off 6 employee spaces in the back lot.
 - > ADA parking is in Taylor's back lot.
 - > ADA parking is accessed through the ally behind Taylor's Restaurant.
 - Only vehicles displaying a ADA placard are allowed to access Taylor's lot.
 - > 382 Total number of parking spaces available
 - > 23 ADA spaces available
 - > 6 Taylors employee spaces Reserved

HAMFEST 2022 SITE PLAN

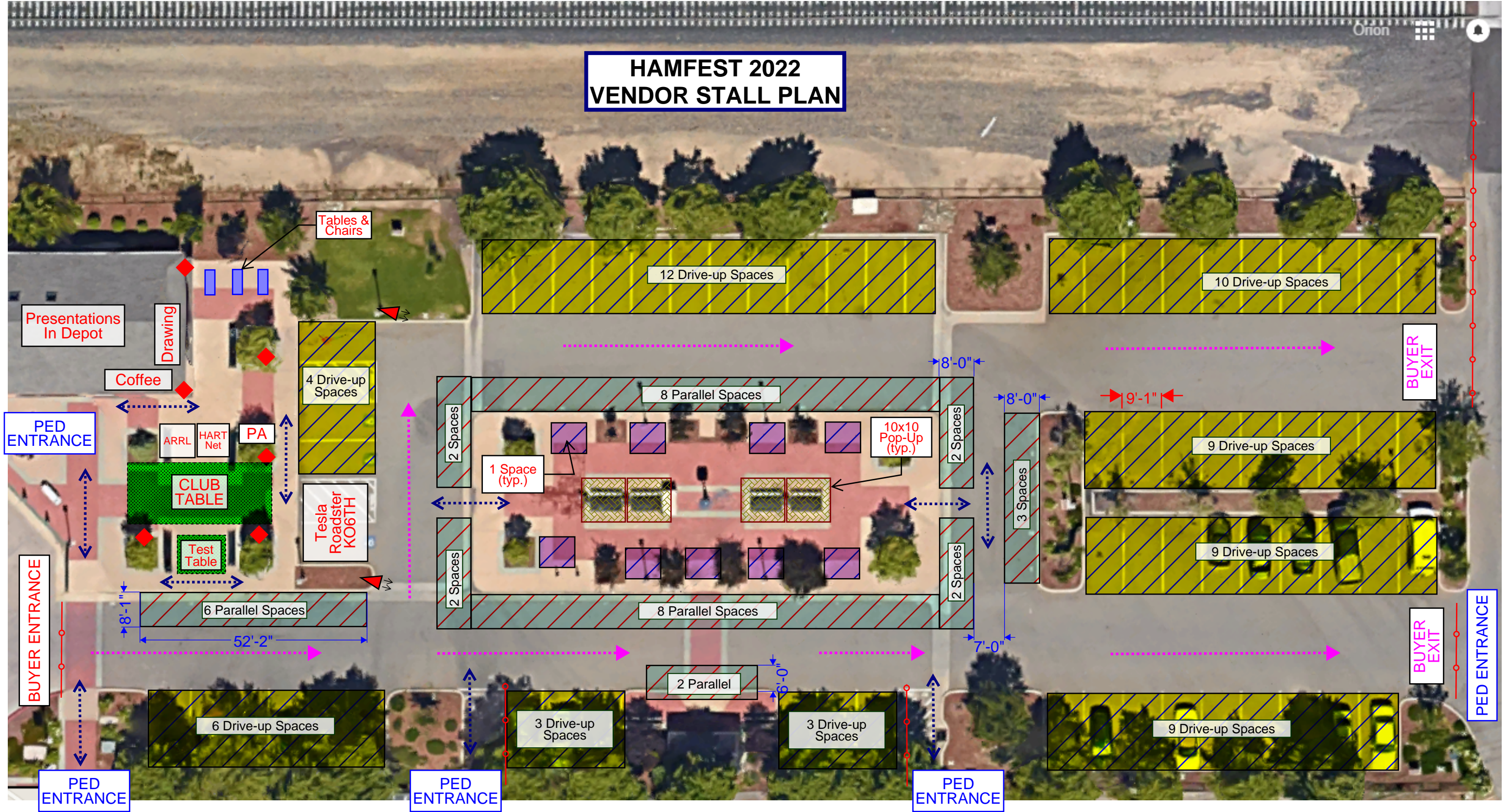
LEGEND:

- ⋯▶ Pedestrian Flow
- Traffic Flow
- ⋯▶ Ped & Seller Flow
- Caution Tape / Cones
- Pop-Up Tent



Site Map Notes:

HAMFEST 2022 VENDOR STALL PLAN



LEGEND:

Pedestrian Flow	Drive-Up Space (65 Total)	Electrical Outlet
Traffic Flow	Parallel Space (36 Total)	PA Speaker Location & Direction
Seller Flow	Walk-Up Space (3 Total)	Club Space
Cautions Tape / Cones		

Map Notes:

- > 111 Total Spaces
- > 66 Drive-Up Spaces (approx size 9'x18')
- > 36 Parallel Spaces (approx size 8'x8')
- > 9 Walk-Up Spaces (approx size 10'x10')



Loomis Hamfest 2022 COMMUNICATIONS PLAN

3/8/2022

Purpose	Identifier	Frequency	Offset	PL Tone
Talk-In / Coffee Break Net:	W6EK Repeater	145.430	-0.6	162.2
Primary Simplex Channel:	TAC 1	146.430	---	---
Secondary Simplex Channel:	TAC 2	146.490	---	---
Parking Channel:	TAC 3	146.505	---	---

SIERRA FOOTHILLS ARC FREQUENCY PLAN				
Channel No.	Identifier	Frequency	Offset	PL Tone
Channel 1	W6EK	145.430	-0.6	162.2
Channel 2	W6SAR, Roseville	146.640	-0.6	156.7
Channel 3	Loomis	146.985	-0.6	94.8
Channel 4	K6IOK	145.130	-0.6	114.8
Channel 5	TAC 1	146.430	---	---
Channel 6	TAC 2	146.490	---	---
Channel 7	TAC 3	146.505	---	---
Channel 8	TAC 4	146.550	---	---
Channel 9	TAC 5	146.570	---	---
Channel 10	TAC 6	441.000	---	---
Channel 11	TAC 7	446.500	---	---