

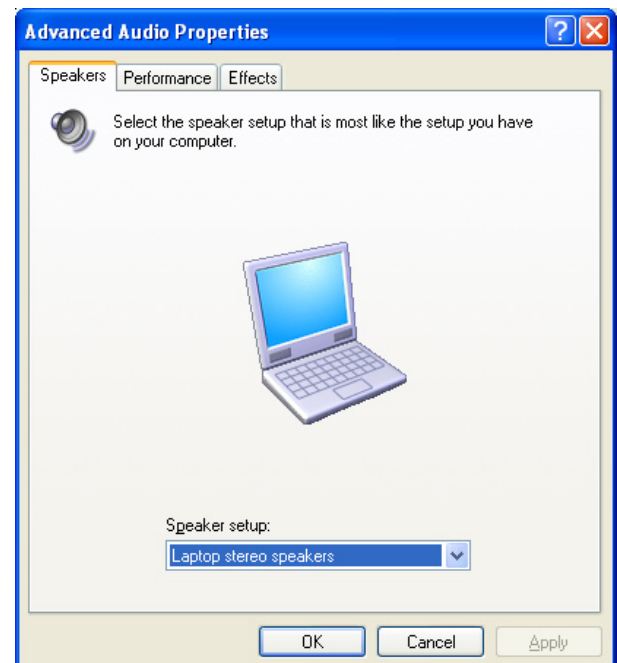
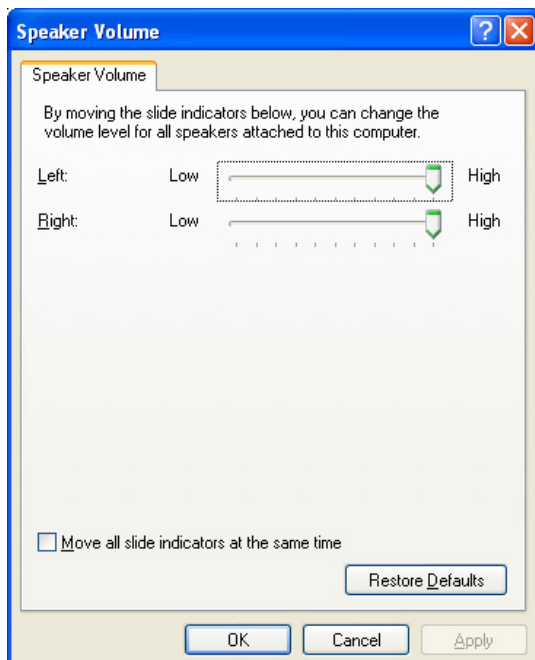
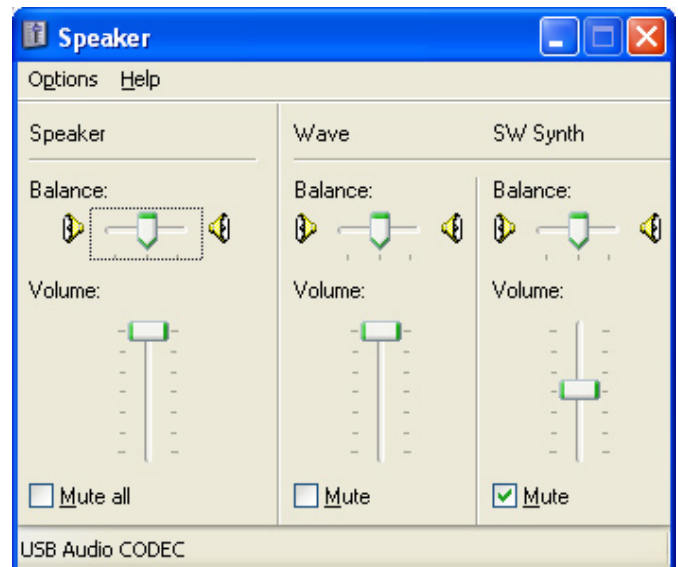
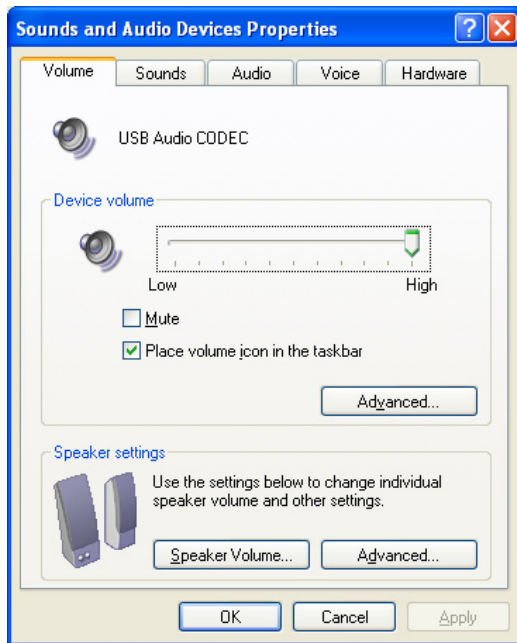
Setting up a Signalink for use with Packet Radio

After experimenting, failing several times, I have found that these settings work for me.

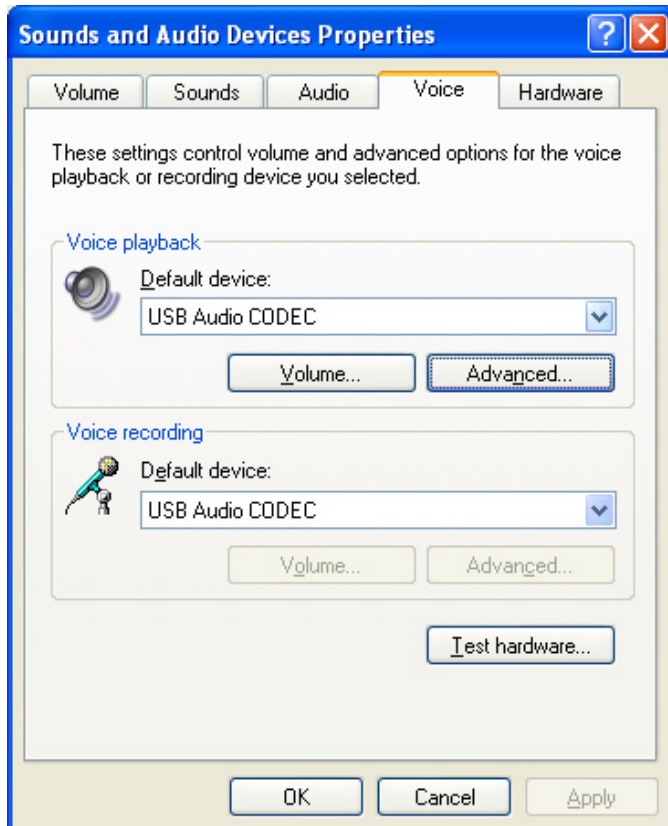
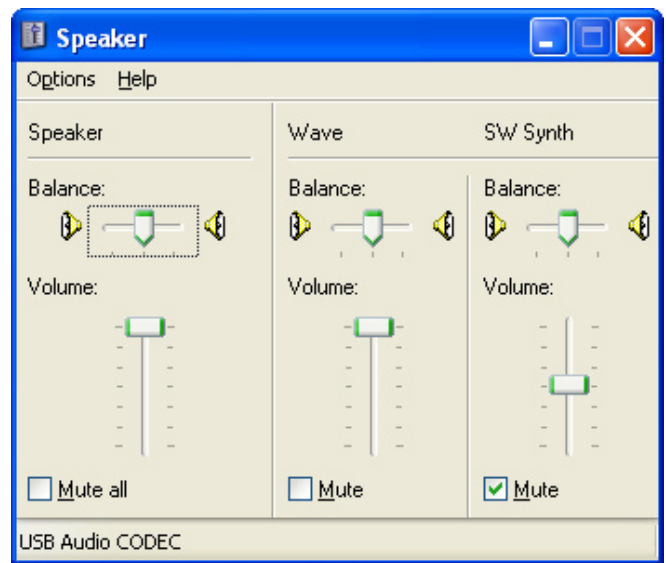
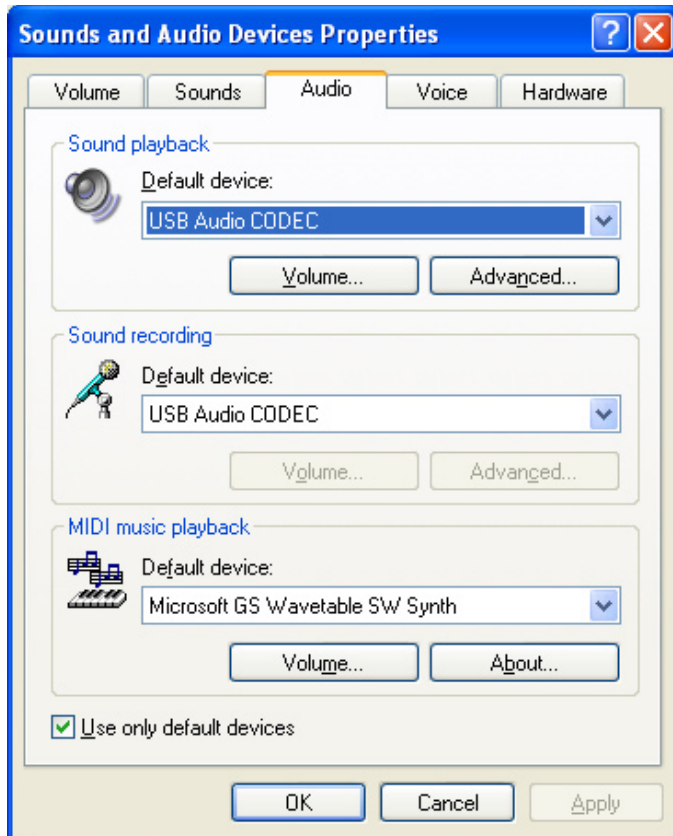
You will need to do the following steps:

1. Set up your computer's sound setting
2. Download, install, and setup AGWPE (<http://www.sv2agw.com/downloads/default.htm>)
3. Download, install, and setup Outpost PM (<http://www.outpostpm.org/>)

Computer Sound Settings

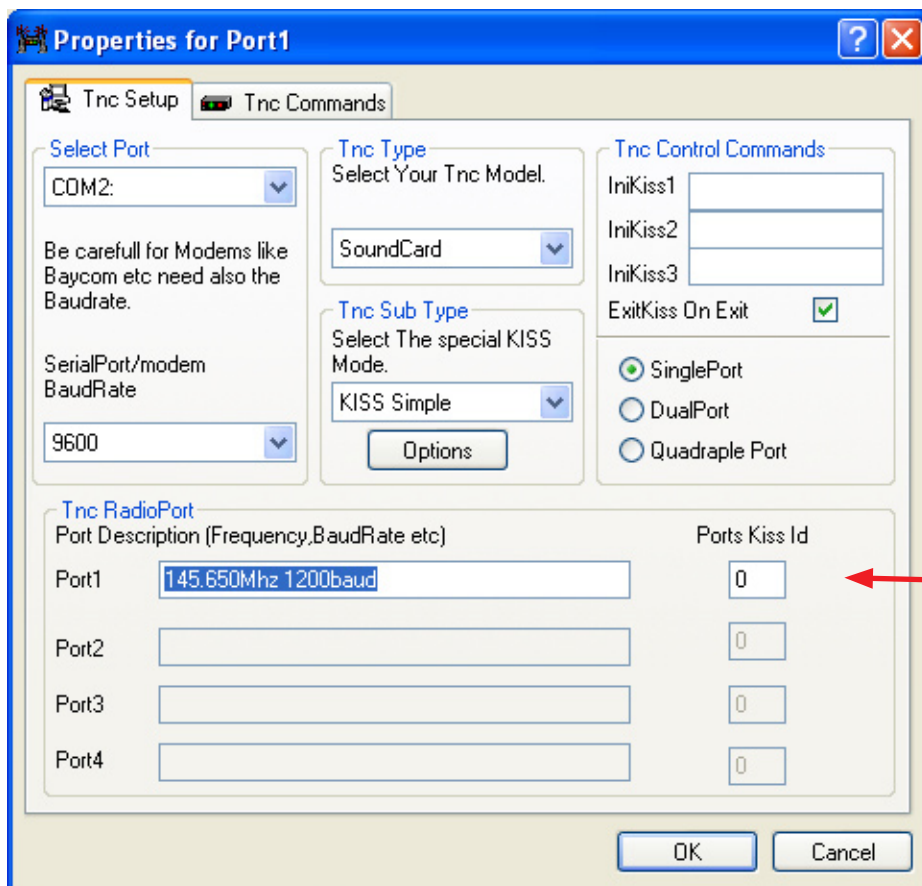
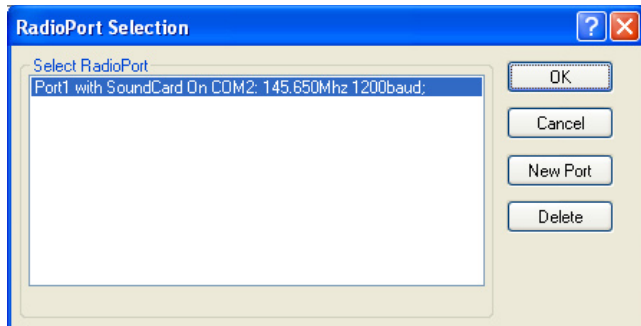


Computer Sound Settings Continued...



AGWPE Settings

When you first start up, create a new port. When I did it it created the port as COM2.
The following are the setting I am using that worked.

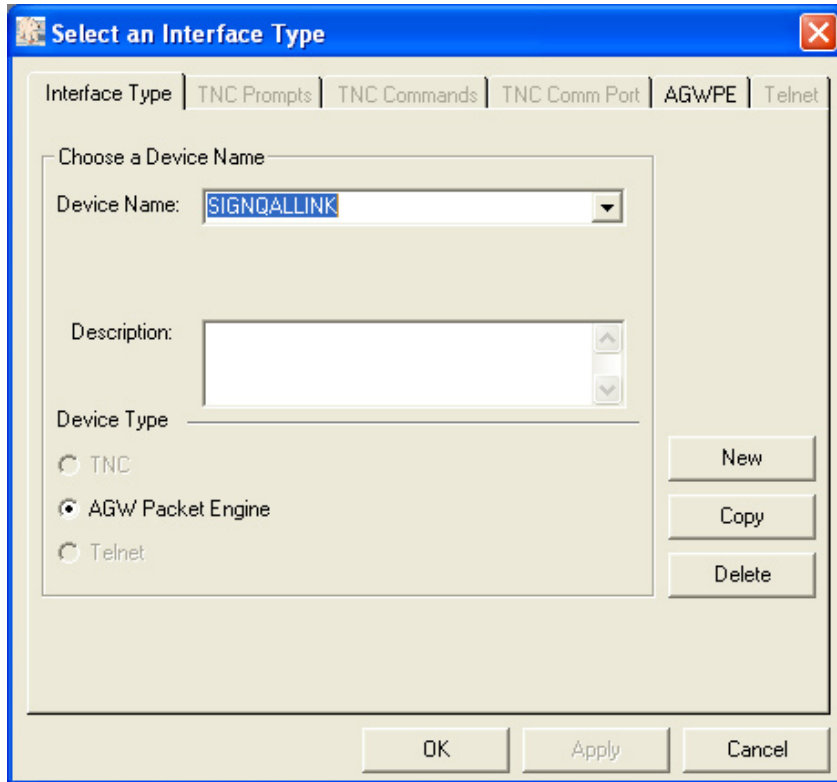


Set Ports KISS Id to 0

Outpost Settings

To use Outpost, you need to setup the TNC for Signalink) and set up a BBS to connect to.

TNC Settings



Select an Interface Type

Interface Type | TNC Prompts | TNC Commands | TNC Comm Port | AGWPE | Telnet

Choose a Device Name

Device Name: **SIGNOALLINK**

Description:

Device Type

☐ TNC

☒ AGW Packet Engine

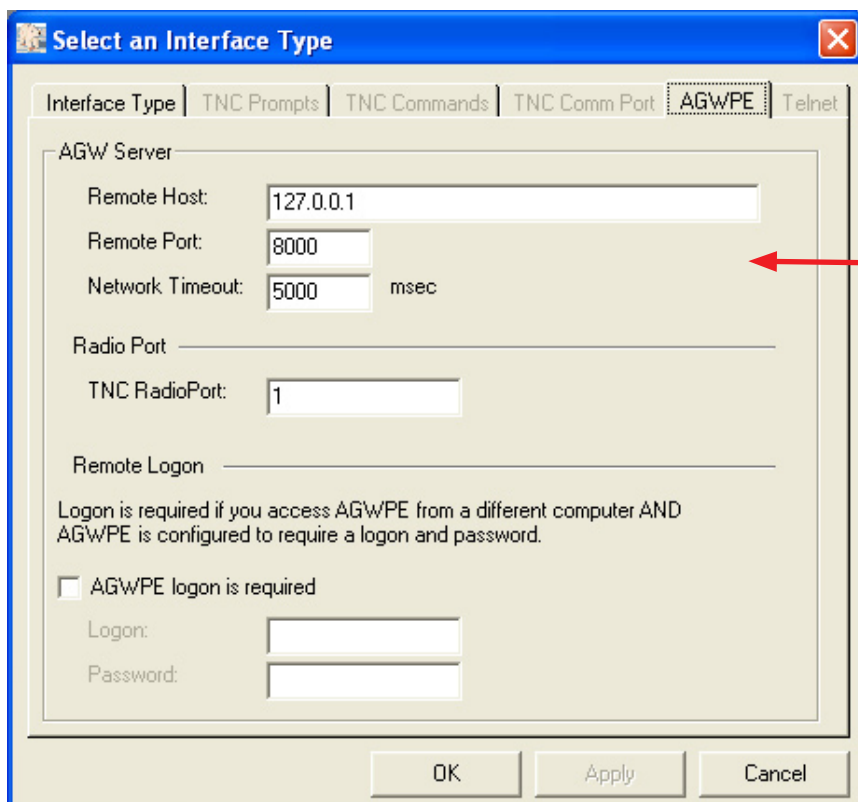
☐ Telnet

New

Copy

Delete

OK Apply Cancel



Select an Interface Type

Interface Type | TNC Prompts | TNC Commands | TNC Comm Port | **AGWPE** | Telnet

AGW Server

Remote Host: 127.0.0.1

Remote Port: 8000

Network Timeout: 5000 msec

Radio Port

TNC RadioPort: 1

Remote Logon

Logon is required if you access AGWPE from a different computer AND AGWPE is configured to require a logon and password.

☐ AGWPE logon is required

Logon:

Password:

OK Apply Cancel

These settings makes the connection to AGWPE

BBS Settings

The 'Select a BBS' dialog box has four tabs: BBS Name, BBS Prompts, BBS Commands, and BBS Path. The 'BBS Name' tab is active. It contains the following fields and options:

- BBS Name:** A dropdown menu showing 'YOLO ARES MAIL BOX, COPY OF'.
- Connect Name:** A text field containing 'ARES'.
- Description:** An empty text area.
- BBS Type:** Radio buttons for:
 - ☒ Let Outpost determine the BBS and set up the prompts
 - ☐ User defines the BBS prompts
- Non-Identifying BBSs:** Radio buttons for:
 - ☐ AA4RE BBS
 - ☐ AA4RE BBS with Tactical Call Customization
- TNC Name:** A text field containing 'SIGNQALLINK'.
- Buttons:** 'New', 'Copy', 'Delete', 'Set/Get TNC', 'OK', 'Apply', and 'Cancel'.

The 'Select a BBS' dialog box has four tabs: BBS Name, BBS Prompts, BBS Commands, and BBS Path. The 'BBS Path' tab is active. It contains the following fields and options:

- Access method:** Radio buttons for:
 - ☐ Direct to BBS
 - ☒ Via digipeater(s): A text field containing 'KBERR'.
 - ☐ KA-NODE/Netrom Access
- Buttons:** 'Create/Update Path', 'OK', 'Apply', and 'Cancel'.

SET THE BBS PATH

FOR WINLINK or ARES PBBS you will need to use at least KBERR. Depending on your location you might need to add another digipeater such a KVOLC, KBERR.

Connecting with Send / Receive

When you click the Send / Receive, you will see a p[rogress window similar to this.

The 'Packet Session Manager' window shows the following text in its main area:

```
TCPIP: Connecting to the Network Interface... connected!
AGWPE: Registering as KG6SJT... complete!
AGWPE: Connecting to ARES via KBERR

*** CONNECTED With Station ARES
[KPC3P-9.1-HM$]
295048 BYTES AVAILABLE IN 20 BLOCK(S)
THERE ARE 10 MESSAGES NUMBERED 1-10
Welcome to the Yolo County ARES BBS
ENTER COMMAND: B,J,K,L,R,S, or Help >
LM
ENTER COMMAND: B,J,K,L,R,S, or Help >
LB
```

At the bottom, there is a checkbox labeled 'Always show this window during a Send/Receive session' which is checked. Below the checkbox, it says 'Retrieving Message List...' and a timer shows '00:00:17'.